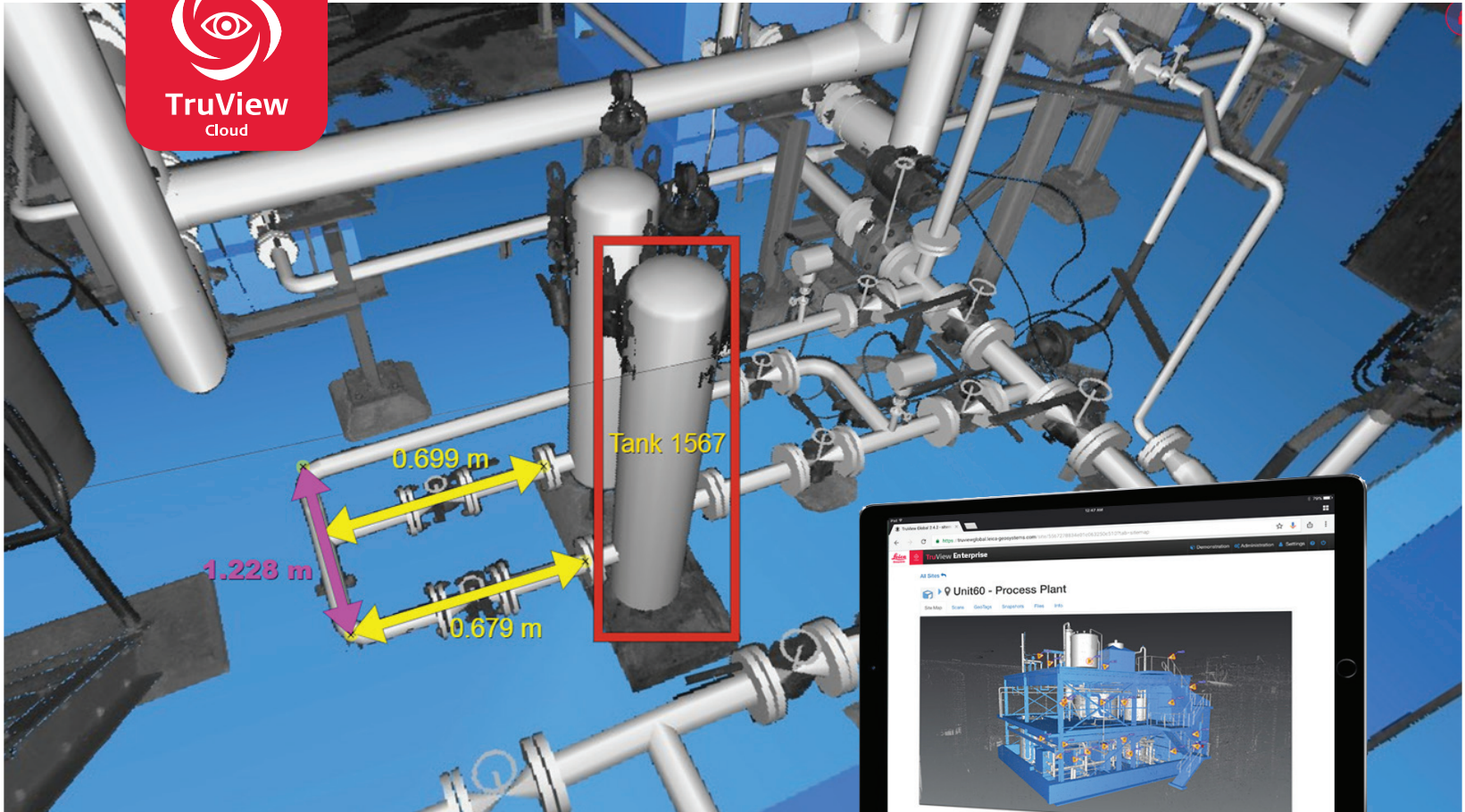


# Leica TruView Cloud

Digital reality data anywhere,  
anytime, any device



## Speed

Leica TruView Cloud is quick, easy to deploy and scale. From first login and license activation, to fully-functioning deployment takes just a few minutes. No IT hardware, software or specialised personnel required. Share data quickly and instantly, sync markups and more for rapid communication and collaboration to meet demanding project timelines.



## Scale

TruView Cloud is an enterprise-level solution that can scale infinitely and instantly based on the volumes you and your clients need - publish all your data, whether it's a handful of setups, or thousands. Unlimited, separate portals can be configured through the TruView Cloud portal. Assign different communities of unlimited users to each portal and assign access on a user-by-user basis.



## Simplicity

TruView Cloud has removed IT hurdles so firms of any size and capacity can set up and maintain an enterprise-level solution. Users do not have to install any app or program. Simply visit the URL you designate and access your TruView digital reality data from a laptop, desktop computer or any mobile device. Easily collaborate with stakeholders and project-manage subcontractors by accepting data from a wide range of sensors, viewing both point clouds and models. Just point and click to unlock rich information.



leica-geosystems.com



- when it has to be **right**

**Leica**  
Geosystems

# Leica TruView Cloud

## Key features

PORTAL AND ADMIN FEATURES	
<b>Projects</b>	Setup unlimited portals with unlimited projects per portal. Activate/deactivate uploaded sites.
<b>Users</b>	Setup unlimited user login accounts, control access and privileges. Assign users per portal. Manage your own user accounts or connect to an available LDAP server.
<b>Accounts</b>	Request, reset lost password
<b>Backups</b>	Create and restore backups
<b>SDK</b>	SDK allows you to extend or integrate TruView's functionality and benefits to amplify the industry's most robust and accessible digital reality data sharing tool.
CLIENT/VISITOR FEATURES	
<b>Data from all your sensors</b>	Data from terrestrial, mobile, handheld and aerial scanning systems from the Leica Geosystems product line as well as third party sensors is supported. All data is easily integrated for seamless viewing. TruView Cloud is compatible with Leica Geosystems universal digital reality file (LGS), as well as TVG datasets published from Cyclone or Cyclone REGISTER 360.
<b>Take any position within your data</b>	Create TruView positions anywhere in your data before publishing for maximum utility of your digital reality information.
<b>GeoTags</b>	GeoTags published from Cyclone as HotSpots are presented in associated spatial location as well as in a searchable table with sorting filters and click-through navigation. Or create on-the-fly GeoTags with file uploads or linking to external sources, URLs and more. GeoTags and Hyperlinks can be exported to an excel file for easy transfer back to Cyclone.
<b>Markup</b>	Call-outs, text, measurements, and coordinate locations. Markups retain metadata of creation timestamp and user. Markups are also presented in a searchable table with sorting filters and click-through navigation.
<b>Layer management</b>	Switch between multiple viewing modes to see 5k imagery, true colour, gray-scale, intensity-colored and infrared point clouds (when data is available from BLK360).
<b>Models</b>	Include models in your TruView data sets to allow for collaboration and identify clashes and design errors before they become a problem.
<b>Hyperlinks</b>	Add hyperlinks to any uploaded file, valid local network application, or web linkable locations. Hyperlinking available for all markup shapes, leaders, text, and GeoTags.
<b>Saved views</b>	Automatic per markup set and recallable. Presented in associated spatial location and in a table format with search/sort and click through navigation.
<b>File storage</b>	Files associated with GeoTags are stored within TruView* and searchable in a table view with sorting filters and click-through navigation.
<b>Collaboration and Syncing</b>	All markups and GeoTags are synced live, allowing instant collaboration capabilities.
<b>Modern interface</b>	Adaptive interface automatically adjusts to user's screen size; supports touch controls for zoom, pan, navigation, and markup on touch capable devices.
<b>Language support</b>	Automatic sensing. Available in English, German, French, Italian, Spanish, Polish, Hungarian, Dutch, Russian, Japanese and Chinese.
HARDWARE AND SYSTEM REQUIREMENTS	
<b>Supported devices</b>	All modern desktops, laptops, tablets and smartphones.
<b>Supported browsers</b>	Chrome 44, Firefox 39, IE 11, Safari 8, IOS Safari 8.3, Android Browser 40, and Chrome for Android 42, or newer. Browsers must be a version sufficient to support WebGL and HTML5.

\* Total storage size allowed is dependent on quantity of setups purchased with the subscription.

Copyright Leica Geosystems AG, 9435 Heerbrugg, Switzerland. All rights reserved. Printed in Switzerland – 2017.  
Leica Geosystems AG is part of Hexagon AB. 864336en - 08.18

**Leica Geosystems AG**  
Heinrich-Wild-Strasse  
9435 Heerbrugg, Switzerland  
+41 71 727 31 31

- when it has to be **right**

