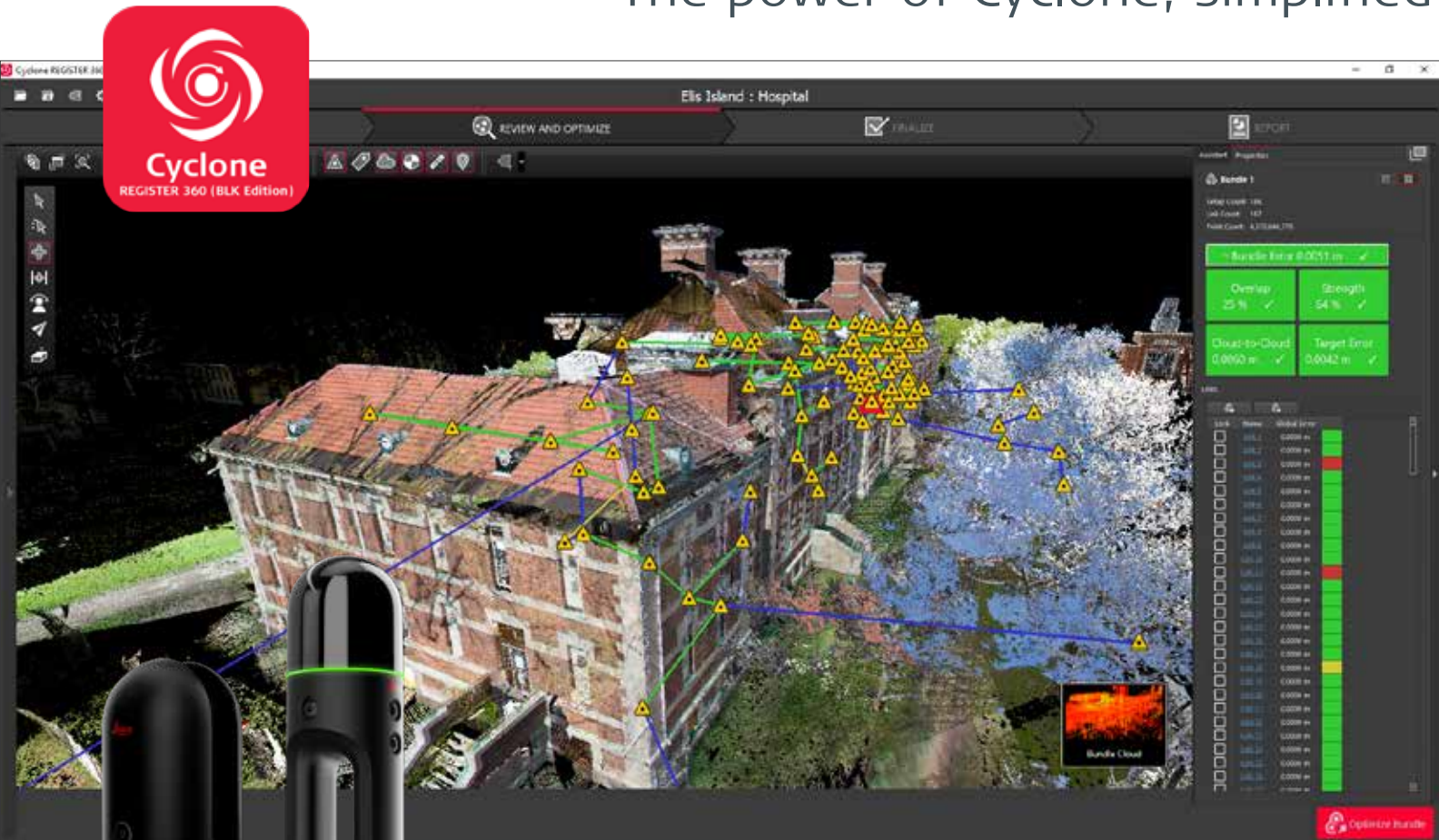


# Leica Cyclone REGISTER 360 (BLK Edition)

## The power of Cyclone, simplified



### Speed

Leica Cyclone REGISTER 360 (BLK Edition) delivers huge time savings and productivity gains for users of all experience levels. Whether you leverage Cyclone FIELD 360 for pre-alignment or allow Cyclone REGISTER 360 to automatically register your scans post-collection, unique guided workflows, built-in QA/QC tools and automated reporting makes the entire process simple and quick. Cyclone REGISTER 360 (BLK Edition) saves significant time and guess work while delivering higher productivity. Scan-Tag-Drag-Drop-Done! - this is the promise of the Cyclone workflow.



### Scale

Cyclone REGISTER 360 (BLK Edition) is optimised for use with the BLK2GO and BLK360 imaging laser scanner. Easily handle projects in the thousands of scans thanks to Cyclone REGISTER 360's superior registration, cleaning and visualisation capabilities and simple, yet powerful interface. Customise settings to suit your working style and speed projects to conclusion. Leverage versioning workflows to keep track of your registration and fuse multiple BLK data sources into one common digital reality.



### Simplicity

Deliver professional-level project deliverables with ease. Cyclone REGISTER 360 (BLK Edition) provides guided registration workflows to assist new users and speed the process for experienced users. Intuitive QA tools and reporting take the guesswork out of your registration quality and put all the information you need at your fingertips. Batch export your final products to a range of formats and programs, including RCP, LGS (Leica Geosystems' universal digital reality file\*), and push live data to the cloud\*\* for global collaboration at the click of a button.

[leica-geosystems.com](http://leica-geosystems.com)

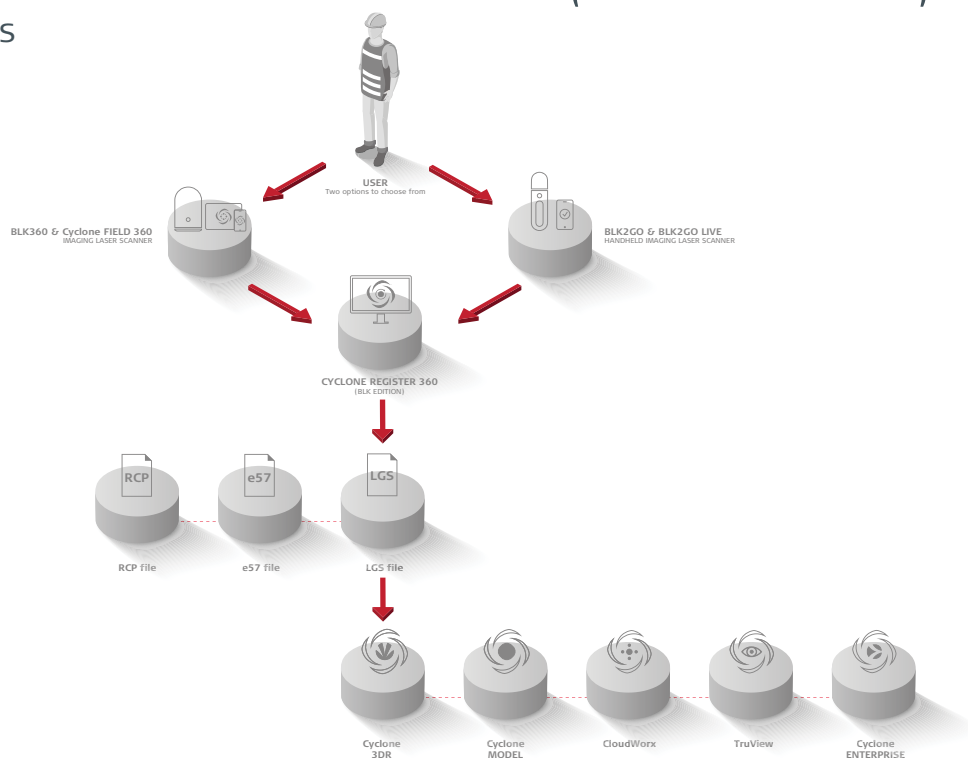


- when it has to be **right**

**Leica**  
Geosystems

# Leica Cyclone REGISTER 360 (BLK Edition)

## Feature highlights



### IMPORT

Direct WiFi transfer	Connect directly to your BLK2GO and BLK360 imaging scanner via its built-in WiFi to import scans from the device
Cyclone FIELD 360 project import	Capture and pre-align data with Cyclone FIELD 360 mobile app (for BLK360 only) and stream your project directly to Cyclone REGISTER 360 (BLK Edition)
BLK360 Data Manager project import	Download .blk files from your BLK360 then drag-and-drop them into Cyclone REGISTER 360 (BLK Edition)
Full support for BLK360 data	Leverage all of the capabilities of your BLK360 including HDR and IR plus unique capabilities when paired with Cyclone FIELD 360 including pre-alignment and GeoTags

### REGISTRATION AND VISUALISATION

Auto-Alignment	Auto-Alignment of scans for target and targetless workflows
Cyclone FIELD 360 pre-alignment	Use Cyclone FIELD 360 in-field alignments as the basis of a registration
Visual Alignment	Quickly visually align scan set ups for cloud-to-cloud registration
SiteMap	SiteMap object for placing scan positions on real world images or user imported images. World map available for use inside the software for SiteMap creation. Satellite and street map views available.
Localisation	Localised in French, German, Italian, Spanish, Simplified Chinese, Japanese, Korean and Russian
Assistant panel	Quickly find help for the most common workflows
GeoTags	Create, edit and publish GeoTags for use downstream in TruView, JetStream and CloudWorx

### QA/QC

Smart Error Matrix	Intuitive, visual error matrix auto populates depending on your link or bundle selection. Acceptable error limits can be set by user.
TruSlicer	Quickly slice the cloud in the X, Y and Z directions to QA your alignment on-the-fly
Detect Moving Objects	Automatically detect objects that have moved between scans and quickly remove them from your scene
Limit Box Manager	Use Limit boxes to isolate areas of interest for visualisation or cleaning
Image Anonymisation	Manually blur faces and licence plates in imagery. Auto-blurring available with a Cyclone PUBLISHER Pro licence.

### PUBLISHING & REPORTING

Visual Registration Report	Auto-generate a professional registration report as a deliverable PDF once registration is QC'ed. Optimised with corresponding symbols for colour-blind users
Intuitive error reporting	Colour-coded links and overall mean error based on user-designated thresholds per project needs
Batch publish with a few clicks	RCP publishing included - Push data directly to TruView Cloud** - LGS (Leica Geosystems' universal digital reality file) TruView Enterprise*, TruView Cloud**, JetStream Enterprise*, Cyclone ENTERPRISE* - Industry standard formats: E57, PTX, PTG, PTS, LAS and more* - Professional registration report

Copyright Leica Geosystems AG, 9435 Heerbrugg, Switzerland. All rights reserved. Printed in Switzerland – 2020.  
Leica Geosystems AG is part of Hexagon AB. 902865en - 02.21

\* With the appropriate Cyclone PUBLISHER licence

\*\* With TruView Cloud subscription

**Leica Geosystems AG**  
Heinrich-Wild-Strasse  
9435 Heerbrugg, Switzerland  
+41 71 727 31 31

- when it has to be **right**

**Leica**  
Geosystems